

G/Glas Glass inspection



Inspection of ground edges in a production line
for automotive glass

› Challenge

Control the quality of ground edges on flat glass sheets. Inspect for chipping, fissures and depth of grind.

› Solution

A roller guides the inspection system along the edge of the glass. The integrated matrix cameras send a continuous stream of images to the attached computer.

The smallest deviations from the ideal grinding contour ($< 0,1$ mm) are detected. The precise assignment of defects to top or underside of the glass sheet assures optimal mapping. A statistical function delivers instantaneous analysis of the grinding process at the push of a button. The system is applicable to complicated curves as well as profiles.

› Application

The inspection system is practical for the complete supervision of grinding quality in the production of automotive glass.

It ensures a complete, inline assessment of the grinding machine and the quality of the grinding tool.

Quality Control of Ground Edges



Advantages

- Continuous supervision of the grinding process
- Detection of grinding defects such as fissures and chipping
- Complete observation of the depth of grind
- Robust recognition, even in complicated curves
- Use of standard hardware
- Easy process integration
- Standard data interface for SPC

Technical data

Resolution: 0,04 mm/Pixel
Camera coverage: 25 x 18 mm²
Maximum speed: 1200 mm/s
Number of cameras: 2

Contact

Bodo Kuhnert (Sales)

Tel.: +49 (0)30 / 42 104-736

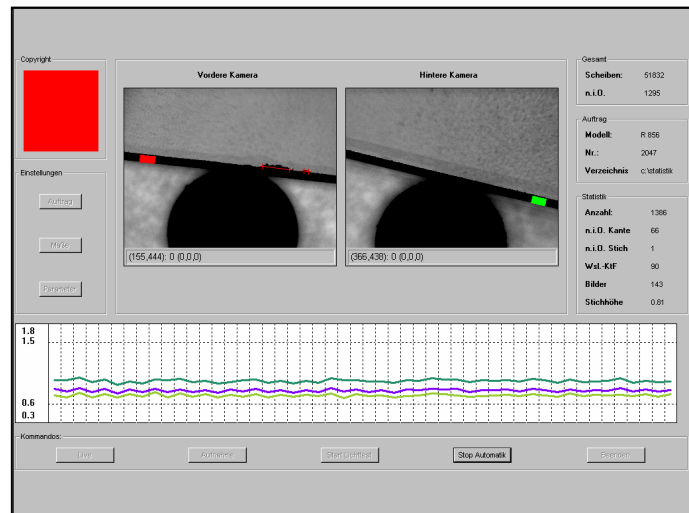
Email: kuhnert@graphikon.de

Peter Handschack (Development)

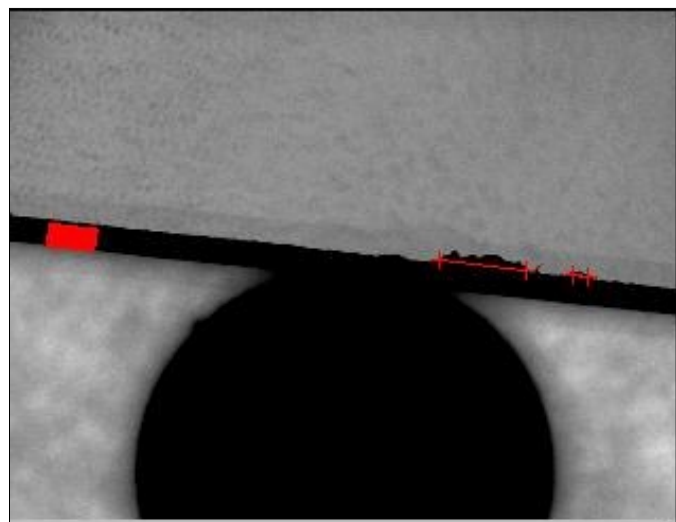
Tel.: +49 (0)30 / 42 104-717

Email: handschack@graphikon.de

G/Glas Glass inspection



User interface



Ground edge with defect