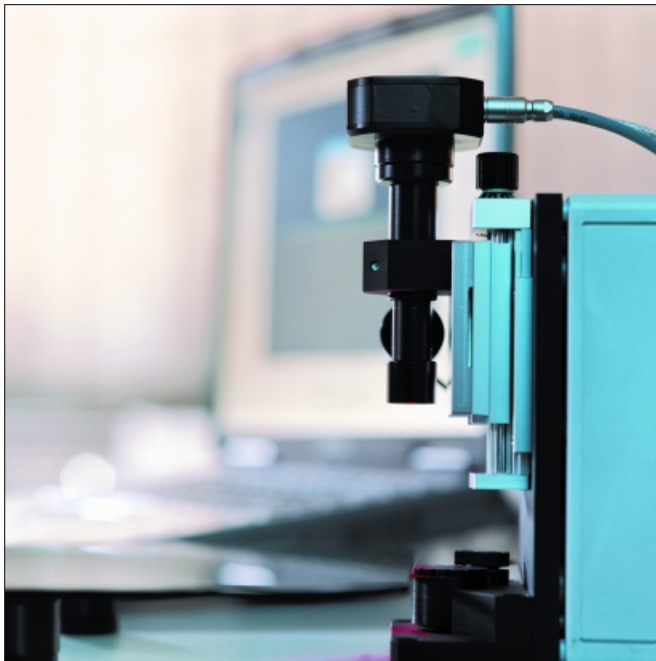


G/Glas GQM



GQM Inspection device with manual handling

Developed in collaboration with:



and



> The Device

Grinding Quality Measure (GQM) is a mobile device to visualize, acquire and evaluate ground edges of glass. It consists of a mobile PC, a compact image acquiring unit and a plating unit for the testee.

A high resolution camera visualizes edge defects up from 10 micron. The automatically detected chip-outs are measured and classified by type and size. The test result is displayed as a standardized index of quality (GQM-Value) or printed out as a test report with detailed defect statistics.

> The Application

Everywhere the precise monitoring of the edge quality is of importance, the device has manifold application opportunities :

- Random sampling in manufacturing process
- Set up of new grinding wheels
- Identification of quality abnormalities
- Optimizing of grinding process parameters
- Long-term documentation of quality
- Intake and final tests

Thanks to the free adjustable defect classes limits the device is extremely flexible.

GQM Inspection of ground Edges



> Benefits

- Easy to use
- Objective validation of grinding results
- Detection of chip-outs, fissures and cracks
- Early identification of process troubles
- Robust measurement of free edge shapes
- Manifold application opportunities
- Use of standard hardware components

> Technical Data

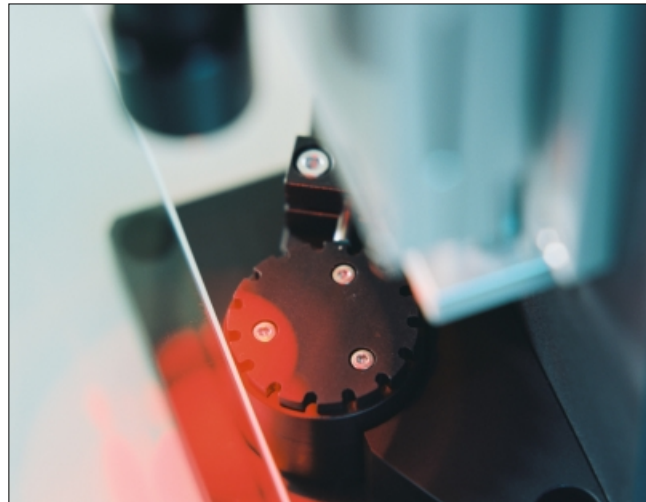
Glass types:	Float glass, tempered glass, LSG
Glass thickness:	0.3 – 30 mm
Inspection speed:	ca. 4 sec. / 100 mm Edge
Dimensions (B x H x T):	600 x 400 x 350 mm
Resolution:	7 microns per pixel

> Contact

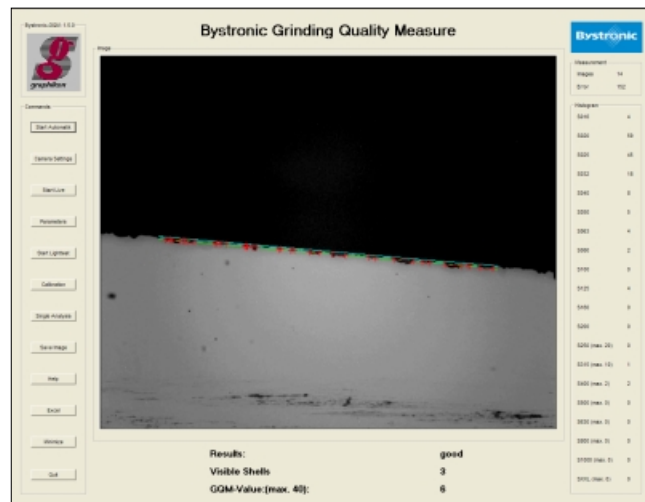
Bodo Kuhnert (Sales)
Tel.: +49 (0)30 / 42 104-736
Email: kuhnert@graphikon.de

Contact to Bystronic:
Bystronic Maschinen AG
Tel.: +41 (0)62 958 77 77
Email: info.glass@bystronic.com

G/Glas GQM



Using of the GQM



Software application