

Measurement of Notched Specimen



> Challenge

Before applying pendulum impact tests to notched specimens complying to forms ISO-U, ISO-V, CHARPY-V, KLST and DVM according to DIN EN 10 045 their dimensions shall be checked contactless with an accuracy of 15 µm.

> Solution

The specimen will manually be placed into the Notch Inspector for optical measurement. The Notch Inspector acquires images of the whole notch bar and with a higher magnification the area of the notch with 2 separate cameras. For the measurement are used the images of all 4 sides of the specimen.

The testing parameters are determined by choosing the type of inserted specimen out of a database. New types and customized tolerances can easily be defined by new parameter sets. For every specimen are surveyed dimensions and angularity. For the notches are measured notch angle, basic height, radius of notch and notch position.

Proven results can get measured by means of optionally available DKD certified calibration bodies and reference specimen.

> Benefit

The Notch Inspector guarantees constant initial parameters for pendulum impact tests.

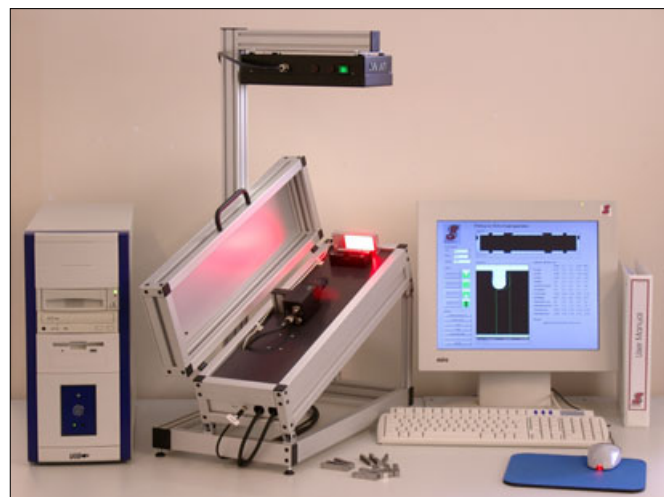
> References

Our customers all over the world trust in the Graphikon Notch Inspector, e.g. Arcelor, Byelorussian Steel Works, Boehler Edelstahl, Corus Steel, Salzgitter, Siemens Power Generation

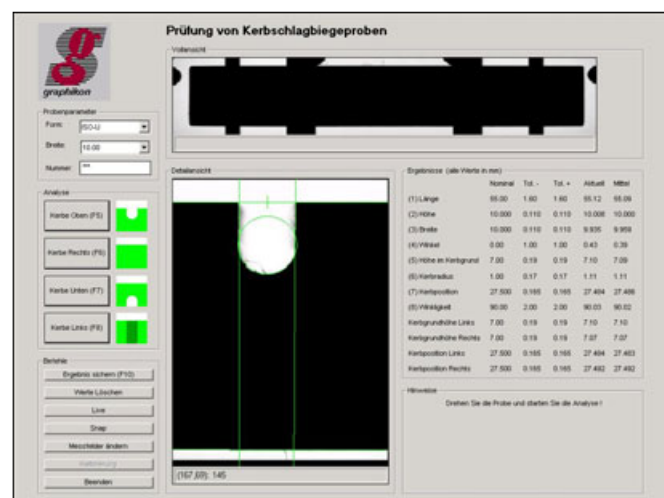
> Contact

Bodo Kuhnert (Sales)
Tel.: +49 (0)30 / 42 104-736
Email: kuhnert@graphikon.de

G/INSPECT Notch Inspector



Notch Inspector



User Interface